



2012 | Issue 12



Peterhouse



Peterhouse issue 12 ♦ 2012

<i>The Master Writes</i>	3
<i>From the Development Director</i>	4
<i>News from the College Libraries</i>	5
<i>The Combination Room Restoration</i>	6
<i>The Plans for Gisborne Court</i>	8
<i>Peterhouse Society</i>	10
<i>Peterhouse Miscellany</i>	12
<i>Development Campaign</i>	13

On the cover

The cover photograph is the view of Gisborne Court, taken from outside the Development Office. When completed, the façade of the new building will take the place of the yew hedge. The plan is to relocate the trees and plants from this border and the gardeners have already prepared the yews and other large plants to be moved to other locations before the work starts on the new building. The temporary buildings associated with a large building project will all be located on the Fen behind the College, so Gisborne Court will not be too much disturbed during construction.

Peterhouse
Cambridge, CB2 1RD
Telephone: 01223 338200
Fax: 01223 337578
Email: develop@pet.cam.ac.uk
www.pet.cam.ac.uk

Photography: Stephen Bond, Quentin Maile
Design & print management: H2 Associates, Cambridge



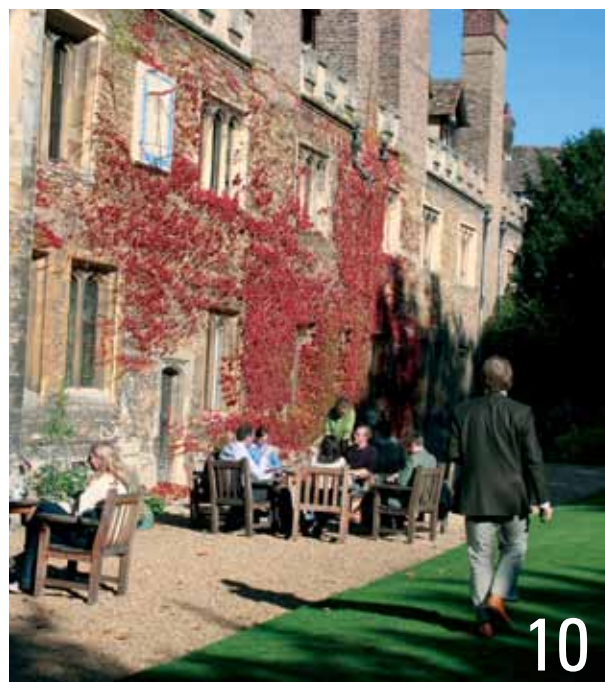
5



6



8



10

5
The College's two libraries, originally founded by bequests, are a precious resource for current junior members and continue to benefit from the generosity of Petreans.

6
Professor David Watkin describes some of the features of the Combination Room, recently renovated with a gift from Mrs Gisela Gledhill (admitted, 2008).

8
Many of the rooms in the new building will enjoy this unfamiliar view of the Fen. Dr Saskia Murk Jansen outlines the latest plans for the new building and the associated renovation of Fen Court.

10
Petreans around the world enjoy each other's company at events organised by the Development Office team under the aegis of the Peterhouse Society.

The Master Writes



The front door of the Master's Lodge where he and Anne Dixon look forward to entertaining you.

The calendar year 2011 proved to be one of steady progress for the College. On the Development side we continue with plans for the refurbishment of Fen Court and the new building to be erected on the Birdwood site. Following the tragedy of the two student deaths at the end of 2010, the College bounced back pretty well, thanks to the combined efforts of the affected friends and families, the Tutors, the Dean and everyone who rallied round. It is also something of a testament to the resilience of our students that they managed to put these events behind them and still performed reasonably well in the summer examinations (although not quite as well as in 2010).

We were delighted to see Peterhouse students do so well in *University Challenge* during the year. Judging by the mailbag, many Petreans clearly enjoyed watching the extended run by the very young team, right up to the semi-finals. The members of the Boat Club are always enthusiastic and Anne and I much enjoy entertaining the first boats for breakfast

It has always been our mission to ensure that no student, whose academic record justifies acceptance and who will benefit from the Peterhouse experience (and vice versa), will be unable to come because of financial concerns.

before their May Races; there were some notable successes with certain crews getting Oars and the inevitable near-misses, sometimes compounded by unforeseen hard luck circumstances. Other Petreans excelled in individual sports (shooting, golf, etc) but athletics seems to be our best current team effort where we continue to do well across the board. Theatre productions, musical events and the varied range of evening society talks truly make the social life of Peterhouse very full. I was personally delighted to hear from my Irish relatives about the success of the Choir tour to Ireland which culminated in an invited evensong at Christchurch Cathedral, Dublin.

It is always pleasing to see large numbers of non-resident Petreans returning at various stages during the year, some to bear gifts, others to meet up with friends from other years. Indeed, in order to catch up with year group reunions, the College hosted two such cohort events in September which were both very well attended, over and above the Annual Gathering in the summer. Many other Petreans took up their dining privileges during the year and saw the College in action at various term-time events – lectures, concerts, etc as listed on the web-site. Some non-resident members return to dine on Sunday evenings and take the opportunity to listen to the Choir and the sermon given by a wide range of distinguished preachers. Members also enjoy visiting the refurbished Ward Library which continues to impress all. I am always struck when I walk through the library in the evenings by just how hard Peterhouse students are working at their studies.

During the year we were fortunate to be able to attract Professor Michael Moriarty FBA, the new Drapers' Professor of French, to join the Fellowship. Heads of Houses and relevant Fellows have to act rather akin to football managers to attract star performers to join the College. It is a great tribute to



The Master, with the other Honorary Graduands, when he was awarded an Honorary MD by the University of Cork June 2011. Left to right: Dr Sha Hailin, former Ambassador of the People's Republic of China to the Republic of Ireland; Commodore Frank Lynch, former Commander of the Irish Navy; The Master; Dr Michael Murphy, President, University College, Cork.

the whole ambience of the College that senior academics choose this small friendly College and it is pleasing to see the envy from other Heads of Houses who have been less successful in the chase! Sadly, we cannot offer transfer fees or other inducements! In any event, Professor Moriarty joins Professor Crane (Knightbridge Professor of Philosophy) and Professor James Stirling FRS (Jacksonian Professor of Natural Philosophy and now Head of the Cavendish Laboratory) as recent professorial recruits to the College. The College continues to explore new appointments in the relatively smaller subjects.

During the year the Bursar and the Clerk of Works have been continuing to develop plans for the new building to replace the Birdwood Building at the far end of Gisborne Court. Planning, architectural aspects, internal design and various logistic problems have now all been largely overcome and we remain confident that, with the help of further donations,

we should be in a position to make a start on this building shortly. We hope that several of the rooms will be named after donors and other benefactors. The overall building is likely to be called the Whittle Building in memory of one of our most distinguished Petreans who has influenced virtually all of our lives. More than that, the name underlines Peterhouse's continuing commitment to engineering and, in particular, aeronautical engineering, which has been prominent in the academic endeavours of this College over the last few decades. Petreans are most welcome to contact the College should they wish to know more about helping us with this 'once in a lifetime' College development.

The debate about university fees continues to evolve. It seems that the University of Cambridge will be charging much the same as most other top level universities in the country. Curiously, this may encourage even more students to apply for Cambridge as prospective students will start to seek out

those universities which offer the best value for their investment. Obviously we will be doing all that we can to assist students who would find such a financial outlay difficult and we are very grateful to those who have already contributed to various hardship and other funds in this regard. It has always been our mission to ensure that no student, whose academic record justifies acceptance and who will benefit from the Peterhouse experience (and vice versa), will be unable to come because of financial concerns. We are already confident that, in terms of educational supervision, accommodation, food and pastoral aspects, we provide as good, if not better, facilities than any other College in Cambridge. We are extremely grateful to our many benefactors and current donors who have made and continue to make the Peterhouse experience possible for our exceptionally bright, young and enthusiastic students.

Adrian Dixon, Master



Saskia Murk Jansen, Ann Munro and Alison Pritchard-Jones.

From the Development Director

My new life in the Development Office has proved to be varied and full of interest. I have thoroughly enjoyed meeting Petreans of different generations and learning more about the history of the College. For example I spent a fascinating morning with the descendant of an early seventeenth-century donor to the College showing him

his ancestor's portrait and discussing the fate of the silver he had given to the College – along with most of the rest of the College's silver it was melted down to support the King during the Civil War. The land he had donated proved to be of longer term benefit to the College – I was pleased to be able to tell him that we still occasionally have a scholarship named after the donor which is notionally paid for by the rental income from that original gift.

I have also re-acquainted myself with the towpath, learned about boating triumphs old and new, and cheered on the current boats and boats crewed by returning oarsmen. I have been delighted to meet Petreans in London, New York and Toronto. In Cambridge I have had the pleasure of showing returning Petreans parts of the College that have changed since they were here. Although little seems to have changed from a cursory glance in at the Porters' Lodge, the Development Campaign has already had a significant impact in many parts of the College (eg the new M staircase, and the Gunn Gallery in the Library). In the future, the plans for Gisborne Court will enable us to make even better use of existing space and further enhance the facilities we are able to offer junior members while reducing our running costs.

I have been heartened by the many contributions and pledges of future support that we have received for the new building, most likely to be named the Whittle Building after Sir Frank Whittle (matric. 1934), the inventor of the Jet Engine. Some Petreans have taken this opportunity to name a room commemorating their or their family's links with the College. Others are contributing to a room named in honour of someone else. It is our aim that all significant donors to the building, subject to their wishes, will be acknowledged in some way within it – on a stone plaque, a piece of calligraphy, or a named room – and we are pleased to be able to provide such an historic opportunity to be linked forever to the College. Another opportunity this project presents is to name a room in Fen Court by contributing towards its renovation, as was done in the William Stone Building.

Finally, no description of the year would be complete without acknowledging the help and support I have received from Ann Munro and Alison Pritchard-Jones. The year would have been much less fun without them.

News from the College Libraries



he College is fortunate indeed to have two superb libraries. Support from Petreans is key to maintaining the quality of our holdings – not only does it permit the purchase of books closely associated with the College in some way, but the ‘Adopt a Book’ scheme also enables the conservation of books which would otherwise be too fragile to be consulted.

Conservation of historic volumes in such a way as to permit their continued use poses particular problems. James Cassels recently completed conservation work on the Henrician partbooks from the Peterhouse Music Manuscripts and on the final partbook from the later Caroline set using the innovative longstich bindings designed by Nicholas Pickwoad that allow books to open completely flat without damage to either paper or binding. The Perne Librarian is always happy to recommend books for conservation that meet a donor’s particular interests.

The Perne Library

Thanks to the generosity of Petreans, it has been possible significantly to augment the Perne library’s holdings of rare books and manuscripts over the past two years. We mentioned last year that a donation from Dr Joe Pesce (matric. 1988) enabled the library to purchase a contemporary scribal copy of Matthew Wren’s notes on the statutes for the Order of the Garter, in a fine late seventeenth-century binding. This year, Professor Stephen Taylor (matric. 1979, Visiting Fellow 2011) has undertaken to fund the purchase of a copy of the first printing of Richard Bentley’s notorious edition of *Paradise Lost* (London, 1732) which was owned and extensively annotated (sometimes with remarks critical of the editor) by John Whalley (Master of Peterhouse, 1733–48).

During the past year, forty-four titles suitable for inclusion in the Perne collections have been given by Petreans or friends of Petreans, including Hans-Jörg Modlmayr (matric. 1964) and his wife Hildegard Modlmayr-Heimath, Rodi Pucinelli, Robert Kemper, Mark Duffy (matric. 1975), and Ed Emery (matric. 1966). These donations

include an apparently unrecorded eighteenth-century edition of *Paradise Lost*, a copy of Bishop Jewel’s *Defence of the Apologie of the Church of England* containing manuscript poetry probably by the first Lord Fairfax (1560–1640), numerous Civil War pamphlets, and an early eighteenth-century German Bible which does not appear among the comprehensive collections of the British and Foreign Bible Society. Several of these accessions have already been used in teaching, both of graduate students from the Faculty of History studying the history of the early modern book, and in supervisions for Paper 4 of the Historical Tripos, which are often held in the Perne Library.

The Ward Library

In August the family of Dr Nigel St John Davison presented 24 volumes of music scores edited by him to the Ward Library in his memory. Dr Davison (matric. 1950, Organ Scholar 1950–54, d. 2009) was one of Europe’s most distinguished musical scholars and an editor of Renaissance polyphony. Amongst the works were four scores based on some of the Peterhouse music manuscripts from the Perne Library.



The Ward Library, embracing the Gunn Gallery, now makes excellent use of the interiors designed by Champneys in the building once occupied by the University’s Museum of Classical Archaeology.

In the course of the year, the Library also received a large number of books in a bequest from D. G. Marriott (matric. 1948, d. 2009) including a first edition of *The Wood beyond the World* by William Morris. The colophon records that it was “Printed by [William Morris] at the Kelmscott Press, Upper Mall, Hammersmith. Finished the 30th day of May, 1894”. There was also a copy of a limited edition of *The Holy Sonnets of John Donne*, with engravings by Eric Gill and signed by him, published by J.M. Dent & Sons in 1938, and some first editions of works by T.S. Eliot. 🌸



The Wood beyond the World, William Morris

The Combination Room Restoration



The east end of the Combination Room laid for a Wedding Breakfast.

The spectacular success of the restoration of the Hall with Richard Harris's legacy caused the Combination Room, part of the same 're-mediaevalisation' undertaken by GG Scott, William Morris and other pre-Raphaelites in the 1870s, to look decidedly shabby. The College was therefore tremendously grateful when Richard Harris's widow, Mrs Gisela Gledhill, offered to pay for it to be similarly restored. The restoration has been done in several phases in the course of the past year to minimise disruption to College activities and the result has been superb. The following commentary provided by Professor David Watkin, Emeritus Fellow, provides justification for the College's desire to restore the room.

The Combination Room has long been regarded as one of the most beautiful and appealing rooms in Cambridge. Built in 1460-4, it is historically interesting as one of the earliest rooms in an Oxford or Cambridge college to be designated from the start as a Common Room or Combination Room. It formed the western

half of the ground floor of a range running east from the Hall of the 1290s with new lodgings for the Master on the first floor. The Combination Room below it was Georgianised in the eighteenth-century with a modern chimneypiece on its west wall and sash windows looking on to the Fellows' Garden. It was re-mediaevalised in 1870 by the architect, George Gilbert Scott, junior, who doubled it in size by incorporating the smaller rooms which were on its eastern side. It formed part of his similar transformation of the Hall, both interiors being enhanced by the firm of Morris and Company with stained glass

windows and tiles in the chimneypieces. The pre-Raphaelite glass by Burne-Jones, William Morris, and Ford Madox Brown, including that in the oriel windows which Scott added to both rooms, is widely acclaimed as amongst their finest work. The panelling in the Combination Room which unusually extends to the low ceiling was designed by Scott, as was the furniture for which his drawings survive in the RIBA Drawings Collection at the Victoria and Albert Museum. The result is a room of extraordinary harmony and poetry, a Victorian *Gesamtkunstwerk* in a mediaeval setting.

The Combination Room has long been regarded as one of the most beautiful and appealing rooms in Cambridge.

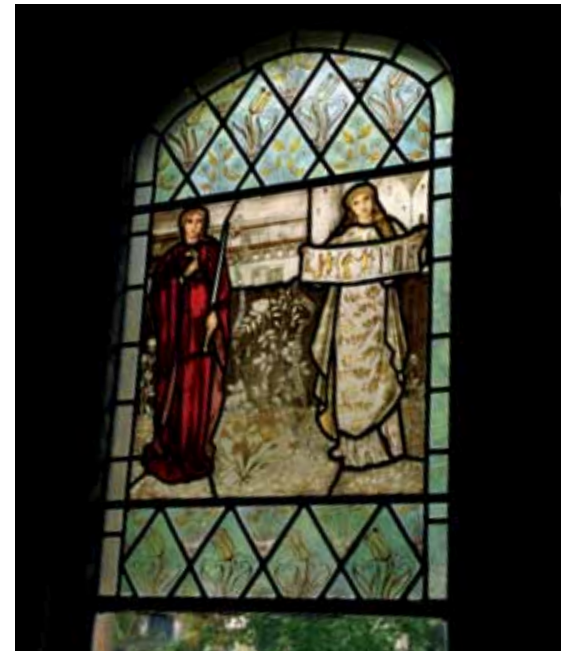
The east end (opposite)

This half of the room was formed by GG Scott out of a number of smaller rooms, doubling the size of the original Combination Room of 1460-64. As a result the room is perhaps somewhat low for its length and the sense of enclosure is further emphasised by Scott's device of carrying the timber panelling over the ceiling as well as the walls. The warm glow of the candles and firelight on winter evenings creates an atmosphere ideally suited to the function of the room. One of the few visible survivals from the 1460s is the massive ceiling beam. A year or two ago, Dr Skaer, Emeritus Fellow in Biology (matric. 1961), found a hatch open and took the opportunity to explore the crawl space. He discovered that there is a beam of similar proportions supporting the floor. The tables are here laid out for a wedding breakfast – the Combination Room is in much demand for conferences and other functions throughout the year.



The chimney-piece at the west end

The tiles by William Morris in this chimney piece include four female figures representing the seasons. These exquisite pre-Raphaelite tiles are amongst the finest of their kind. Whereas other firms at this time printed outlines on to plain white tiles which were then filled in with unskilled labour, Morris, Charles Faulkner and his sisters themselves carried out both processes.



The chimney piece in the south wall

This is lined with the same daisy-pattern tiles, designed by William Morris in 1861, which appear in the chimney pieces in the Hall and the hall of the Master's Lodge. Scott derived the style of the panelling from a type introduced into England from Flanders or Westphalia in the late fifteenth-century. The combination of curved rib panels with the Renaissance feature of medallion heads in wreaths suggests that Scott's source was the remarkable panelled room of the 1520s at Boughton Malherbe, Kent, sold to the USA in 1919.

Bay Window

This window is one of the additions made to the old Combination Room by Scott in 1870. The Burne-Jones glass of scenes from Chaucer's 'Legend of Goode Wimmen' dates from 1869 and was put up in memory of George Druce, a Fellow in classics who had been killed in a riding accident that year. Burne-Jones's windows are remarkable for the delicacy and detail of their backgrounds in grisaille and yellowstain.



The plans for **Gisborne Court**

The building that is to replace the Birdwood is part of a much larger project which will enable the College to make maximum use of the site and adjacent properties. It will enable all our undergraduates to be housed on site – close to the dining hall, the library, the gym and other College facilities. The hostels on Parker's Piece can then be let out commercially – thereby both reducing our costs and increasing our income. In due course, when the College is called upon to increase its graduate numbers to support the University's plan for modest expansion, the hostels can be taken back for graduate accommodation.

In addition to the student rooms, the new building will have two purpose-built music-practice rooms and a large function room to more than replace the room lost when the Music Room was converted to residential use as M Staircase. A new gym will be created in a basement area under the grass between Fen Court and the wall, and the JCR (or Sex Club) and the bar will be moved from the end of Old Court into the new building. The current JCR and bar will be converted into a new and enlarged MCR and a double set. The current MCR will become a Fellow's Set. All in all the project will provide two new Fellow's sets (one in the new building and one in Old Court) and refurbish a third one (in Fen Court). The new sets are key to enabling the College to increase the number of Research Fellows. Research Fellows are important for the vigour of the academic



The view of the College from the Fen.

community, are a valuable first step on the career ladder especially for academics in the arts, and many go on to become the academic stars of the future thereby adding lustre to the College.

As many of you will remember, deliveries to Peterhouse are somewhat of an inconvenience – either to traffic on Trumpington Road or to those of us in Gisborne Court and Fen Court. It can only be a matter of time before delivery vehicles will be banned from stopping at the Porters' Lodge. The planned new building will enable all deliveries to the kitchens to be routed down Mill Lane, past the Graduate Centre and the DoubleTree Hilton Hotel (still the Garden House for many of us!), to a

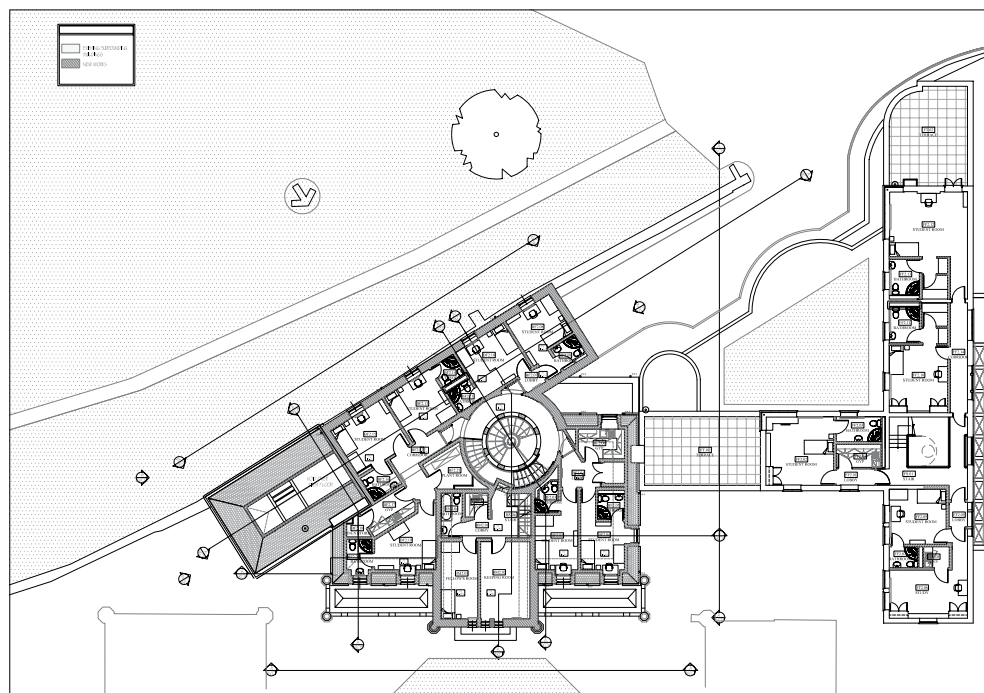
new gate in the lower wall. They will then go down a short ramp and make their way underneath the new building to emerge on the other side of Gisborne Court near the kitchens. The area between Fen Court, the Library and M Staircase can then be turned into a garden, further enhancing this corner of College.

The new accommodation, facilities, and enhanced gardens will enable the Conference Department to increase their revenue stream. At present most conferences are repeat business which is a credit to the way this aspect of the College is run but it limits the opportunities to increase income. The quality accommodation in the new building will make a modest expansion in the high-end



The plans

The plan is of the second floor and shows clearly the new route for delivery vehicles. A gate will be made in the wall at the lower level opposite the entrance to the Hotel; vehicles will go down a short ramp and underneath the new building to emerge on the other side of Gisborne Court. In order to rebuild the wall precisely, the position of every stone will be carefully noted. The rooms over the tunnel will be some of those enjoying lovely views over the Fen, but possibly the best view will be from the study at the top of the turret which will be part of the new Fellow's set. Both the elevation and the plan show the relationship of the new building to Fen Court. Fen Court is anyway in need of renovation, so as part of this project the rooms will all be refurbished and provided with en-suite bathrooms – a benefit to both our undergraduates and the conference trade and a far cry from the days of the Birdwood! Like the refurbishment of the William Stone, this provides an opportunity for Petreans to have their name permanently above the door of their old room if they contribute to the cost of its refurbishment.



The plans for the new building are coming close to fruition. Many Petreans have already pledged financial support for the project – likely to be the last building initiative for the foreseeable future.

and niche conference trade possible, thereby further supporting the College's ability to fulfil its educational aims.

The plans for the new building are coming close to fruition. Many Petreans have already pledged financial support for the project – likely to be the last building initiative for the foreseeable future. If the total pledged in the coming months increases to meet the

financial shortfall, the College will have the confidence to commence the next phase of the building. If all goes according to plan we hope to break the ground for the new building later this year.

We have therefore taken this opportunity to include some photographs of the site as it is now for posterity. There is the view of the College from the Fen – the new

building has been designed to retain the appearance of a patchwork of roofs and to provide a visual foil for Fen Court. Another view is taken from the roof of DoubleTree Hilton Hotel and provides an aerial reference point. The plan shows the new route for the delivery vehicles and the layout of the rooms which will ensure that as many as possible enjoy spectacular views over the Fen.

If you are interested in naming a room, or perhaps putting your name permanently over the room you had in Fen Court, do contact the Development Office. We would also be pleased to help those who would like to name a room jointly with others in honour of a Fellow or another Petrean.

For further information, please contact the Development Director
Telephone: 01223 765187
Email: saskia.murkjansen@pet.cam.ac.uk

The College seen from the roof of the DoubleTree Hilton Hotel.





The Peterhouse Society

The Peterhouse Society is the social and Petrean networking arm of the College. When you leave Peterhouse you automatically become a member of the Peterhouse Society – known in the USA as the Brewster Association, named after William Brewster a Petrean who went over on the Mayflower. The Peterhouse Society Committee, made up of Petreans from different decades, meets three times a year and supports the College in devising a programme of interesting events. The keystone of the programme is of course the Annual Gathering in Peterhouse at the end of the Easter Term, but other events are held around the world during the course of the year, taking advantage of Fellows travelling on academic business. A new event for 2012 will be the Family Garden Party on July 14th. With children's entertainers and party food, it will be an occasion for Petreans to bring their children or grandchildren to the College.

In 2011 Petreans in Hong Kong and America seem to have been especially busy. In March, Dr Robert Ross Russell met with a group of Petreans in the bar of the Mandarin Oriental Hotel. Dr Ross Russell has been a Fellow of Peterhouse since 2001 and is a consultant Pediatrician at Addenbrookes Hospital. He was in Hong Kong for a conference at which he gave a paper. In April the Cross Keys Cricket Club, led by former Peterhouse Society Committee member Jamie Muir Wood (matric. 1998) did a tour of Hong Kong. They faced a President's XI and played against the Kowloon Cricket Club and also had a great time meeting with Petreans for a dinner in the Lockhart Room at the Hong Kong Football Club.

Back in the UK, April saw the 55th anniversary dinner celebrating the success of the Peterhouse Boat Club in 1956 when they were not only Head of the River but also won the Ladies Plate at Henley. We were delighted that most of the original crew with their wives were able to join current Boat Club members for the dinner. Brian Oxley (matric. 1953), who rowed at number 6, came all the way from Canada to be there. The following morning saw the launch and first outing of the new ladies' eight, the Chris Calladine, paid for by contributions to the Peterhouse Boat Club

Fund. Professor Calladine, now Emeritus Fellow and long time stalwart supporter of rowing at Peterhouse, performed the necessary baptism with his wife, Dr Mary Calladine. The crew of '56 then cheered and clapped as the ladies launched the boat and took it for its first outing.

In May, postponed from April on account of the Royal Wedding, there was the annual City Drinks party at Corney and Barrow near Liverpool Street Station. The evening was warm and the bar was crowded, but nevertheless some 20 or more Petreans who work in the City gathered to meet with the Master and Professor Tim Crane, our new Fellow in Philosophy. We were delighted to see Simon Nash (matric. 1981) who was in London over from New Zealand for the London International Wine Fair.

In June the Gathering took place on the weekend immediately following General Admissions as usual. The format was slightly different this year and focussed on the Saturday with a talk on the Peterhouse



Lunch on the day of the vote for the new Chancellor.

In October many Petreans came back to Cambridge to vote for the new Chancellor.



Professor Chris Calladine and his wife Mary christening the new ladies' eight.

- > Boat Club Dinner
- > Petreans at MoMA
- > Toronto
- > San Francisco
- > Chancellor's lunch
- > London Drinks
- > Petrean Dinners
- > Master in Dublin



Jet Photographic

Peterhouse Boat Club Reunion Dinner 2011.

Part Books by Scott Mandelbrote (matric. 1998) Admissions Tutor and Perne Librarian, tea in the DoubleTree Hilton (the Garden House Hotel as was), and drinks in the Master's garden followed by dinner in Hall with the College silver on display. The Gathering in 2012 will have a similar format with talks on an Olympic theme. We have also had a request from some Petreans in America who were up between 1965 and 1975, to encourage others from that decade to come next year as they will be making the trip across the Atlantic specially in the hope of meeting old friends.

In July a number of Petreans from the New York Area met at the Museum of Modern Art kindly hosted by Michael Allen (matric. 1959) and organised by Christopher Hudson (matric. 1966), who is the Museum's publisher. Saskia Murk Jansen took advantage of being in North America to visit Petreans in New York and Toronto. She brought along the architect's plans for the new building in Gisborne Court so everyone had a preview. We were delighted that John McNee (matric. 1973) and his wife Susan were able to join us – it was their last few days in New York where John had been serving as the Canadian

Ambassador to the UN before returning to Ottawa. Saskia then went on to Toronto and had a delightful evening with Canadian Petreans at the King Edward Hotel.

In August, Petreans in the San Francisco Bay area were invited to a garden party at the home of Dr Jeremy Isenberg (matric. 1962). The party was organised by Emma Toogood (matric. 1997) who has recently moved there from London. By good fortune, Roddy Houston (matric. 1986), a member of the Peterhouse Society Committee, happened to be in San Francisco at that time and was able to join the party.

The two Petrean dinners in September were very well attended – the oldest Petrean present was Mr Wulf Rudoe who had matriculated in 1935. We were very pleased that some of our most eminent Petreans, Lord Howard (matric. 1959) and Lord Stern (matric. 1964) were able to join us.

Also in September, the Master met with several Irish-based Petreans while he was lecturing in Dublin; as an Honorary Fellow, he was participating in the 50th

Anniversary of the formation of the Faculty of Radiologists within the Royal College of Surgeons in Ireland.

In October many Petreans came back to Cambridge to vote for the new Chancellor. The College hosted a lunch for those who came to vote on the Saturday and this proved to be a particularly convivial occasion with Petreans who had not seen one another for years enjoying each other's company in the Fellows' Garden. Later in the month a number of Petreans in London met at the Cafe Koha near Leicester Square. Paula Vanninen (matric. 1987) entertained the group with an exercise she uses in her capacity as a "life coach".

(above) Petreans gather in San Francisco (photographs: Christine Holt, wife of Neville Holt (matric. 1954).

(below) Michael Allen and Christopher Hudson with Saskia Murk Jansen in New York.



Peterhouse Miscellany

- > Peterhouse Development Campaign
- > Ways to give
- > Petreans in the USA
- > Friends of Peterhouse
- > William Stone Society

Members' privileges

Dining: All members of the College are reminded of their privilege of dining as a College guest on any three ordinary nights in Full-Term in the calendar year, subject to at least one Fellow also dining. Wednesdays and Sundays are always good occasions. Please tell the kitchens (telephone 01223 338206) of your intention to dine at least 24 hours in advance. The meal is free but, as for all members of High Table, there will be a modest charge for wine.

Guest Rooms: Guest rooms at the College are available at a modest charge to members but they must be booked through a Fellow. Most have recently been redecorated and brought up to a very high standard of comfort. The majority are single, though a few double and twin rooms are also available. Unfortunately the College is unable to provide accommodation for children under the age of 14. If you would like to book one, please contact the Development Office who will be happy to help. (develop@pet.cam.ac.uk; 01223 765187)

Your event at Peterhouse

As an important part of its strategy of financial self-reliance, Peterhouse actively offers, on a commercial basis, facilities for conferences, meetings, dinners, luncheons, and events of all kinds, consistent with the academic life and work of the College. We are able to provide high-quality public and meeting rooms, some of marked historical and aesthetic interest, in a range of layouts and sizes; a number of bedrooms of good quality; food – ranging from teas through to buffets, luncheons, dinners, receptions and parties – to the highest standards of preparation and service; all necessary audio-visual equipment; and full technical and administrative back-up. Bedrooms and public rooms have been refurbished and redecorated to high

standards; the kitchens have been remodelled and modernised; excellent dining and meeting rooms have been created; and the Friends of Peterhouse Theatre and the Lubbock Room, available for meetings, presentation and receptions, have been enhanced and redecorated. Petreans can help their College greatly by considering Peterhouse as a venue for conferences, meetings, or events involving catering, whether in their own right or on behalf of companies or organisations with which they are connected. Your event need not be confined solely to vacations: there is abundant scope in term-time too, especially where members of the College are concerned.

Ms Anne Gifford, the College's Conference Co-ordinator, provides a dedicated conference service and will be delighted to discuss with you the full details of what the College has to offer. She can be contacted in any of the following ways:

- » Telephone: 01223 338205
- » Fax: 01223 338245
- » E-mail: anne.gifford@pet.cam.ac.uk
- » Conferences web-site: www.peterhouse-conferences.co.uk



The Development Office

The Peterhouse Development Office can be found on the ground floor of Gisborne Court, in Room L1. We are always pleased to see Petreans who are visiting Cambridge.

Peterhouse Development Campaign

The Peterhouse Development Campaign aims to support the College in every aspect of its life and work – as a special and historic place, as a community of people, and as a home of education and intellectual life. The Development Office is always pleased to advise on ways of supporting the College that meet your circumstances, and on how your support can benefit aspects of Peterhouse's purposes that particularly appeal to you.

Ways to give

Gift Aid

The College is able to reclaim 25p for every pound of your donation, increasing the value of your gift to the College at no cost to you. If you pay a higher rate of tax, you as donor can in addition reclaim the balance of the tax paid.

Shares

The transfer of shares now qualifies for both Income Tax and Capital Gains Tax relief and therefore represents a welcome way of making a donation that is worth significantly more to the College than its cost to the donor. The cost to you of a gift of listed shares, unit trusts or securities could be as low as 20–40% of its real value to the College.

Tax repayments

Peterhouse also participates in the H.M. Revenue and Customs scheme that allows any individual to nominate the College, through the annual self-assessment tax return, to receive tax repayments as a donation. This scheme supplements, but does not replace, the familiar Gift Aid scheme.

Charities Aid Foundation vouchers

However, no additional tax benefit to the College will accrue.

Gifts in kind

Properties and works of art are all exempt from Capital Gains and Inheritance Tax.



Life insurance

Naming the College as the beneficiary of a policy allows a member to make a larger and earlier potential gift than might otherwise be found possible. These advantages are possible because the donor need only pay an annual premium – which, importantly, is tax-deductible – rather than having to donate the entire value of the gift.

Legacies

By inclusion of the words 'The Master (or Keeper) and Fellows of Peterhouse in the University of Cambridge' in your will (we would be grateful to know if you intend to remember the College in this way so that we can add you to the list of members of the William Stone Society). A brochure on the making of legacies is available from the Development Office.

Limited Liability Companies and Partnerships

Those who would like to help the College through their Limited Liability Companies and Partnerships might also like to bear in mind that donations to the College offer tax benefits to companies when computing their Corporation Tax liability, and that no forms are necessary to make tax-efficient donations to the College.

If you would like to know more, please contact the Development Director.

Peterhouse Development Campaign

Petreans in the USA

The address of 'Cambridge in America' (CAm), the jointly-established University/College channel through which donations may be made for the benefit of Peterhouse in a 'tax-efficient' way is:

292 Madison Avenue, 8th Floor,
New York, NY 10017, USA
Telephone: (212) 984 0960
Fax: (212) 984 0970
E-mail: mail@cantab.org
Web-site: www.cantab.org

Friends of Peterhouse

The Friends of Peterhouse is an association set up "to advance the educational and other charitable work" of the College. It is governed by a Council of Petreans which is independent of the College's Governing Body, and is incorporated as a company limited by guarantee and registered as a charity. If you would like to know more about membership of the Friends or about making a donation to them, please contact: friends@pet.cam.ac.uk

William Stone Society

October saw the inaugural dinner of the William Stone Society for Petreans who have remembered the College in their will together with their wives and partners. Drinks were taken in the Master's Lodge followed by dinner in the Combination Room. It is hoped that many of those who were not able to attend this year will plan to come back to the College for this event in future years.



2011 was another successful year for the College with a total of just over £512,000 being raised. Gift Aid will add approximately a further £71,200. Almost £120,000 was received in respect of scholarships and student support; just over £14,000 was donated to the Boat Club Fund; and a further £10,710 was raised for the renovation of the organ. Just over £34,000 was donated to Cambridge in America from Petreans living in the United States. There were also 118 new Petrean donors to the Campaign.

The year began with the Development Office holding its seventh successive annual telephone campaign between Monday 10th and Monday 17th January. Once again we were assisted by our Campaign Associates, Buffalo Fundraising Consultants of Bristol, and 12 junior members. We were again delighted by the generosity of our members, and raised just over £110,600.

College News

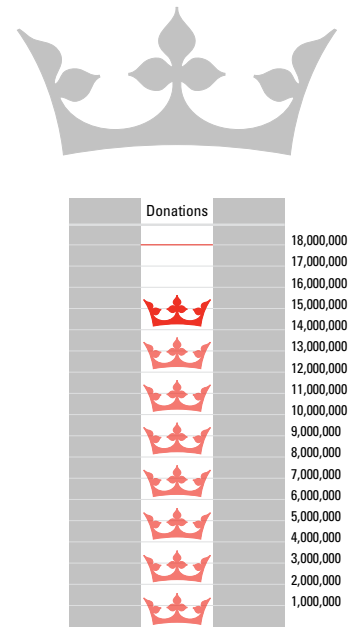
Alfred Brendel

The renowned pianist, Alfred Brendel, was the University's first Humanitas Visiting Professor of Chamber Music. He was admitted as a Visiting Fellow of Peterhouse in May and stayed in College. During his visit he gave two lectures, an open rehearsal with the Szymanowski Quartet and a concert by the Szymanowski Quartet on the following day.



The figure (right) illustrates the extent of donations and pledges made to the College in the period since the Development Campaign was launched in the summer of 2004, as set against the initial target of £18 million. Some £15,395,903 in new support has now been generated since the launch of the Campaign.

The figures exclude donations and pledges made to the Friends of Peterhouse but not yet made over to the College, pledges known to derive from commitments made to the College before the summer of 2004, and the College's own £2 million commitment to the Campaign. Legacies pledged are included at their most conservative value; the figures exclude 62 indicated legacies of unknown value.



It may reassure donors to know that, even in these very difficult times, the College's endowment capital and investment income have proven to be reasonably resilient. Over recent years Peterhouse has ranked consistently amongst the best-performing colleges in this regard.

Memorial Bench

In March undergraduate friends of the late Neil Plevy met in College to launch a bench in his memory. Neil's family was represented by his sister Julia. The bench is situated at the end of the Scholars' Garden, overlooking the Puccinelli statues Neil helped to bring to the College.



Donors to the Development Fund, 2011

1931 Mr Charles E.N. Wyatt	Mr Donald Hood Mr A. James Little Professor Brian H. Mayall Dr John G. Miller Mr David G. Ward	Mr Richard J.V. Dixon Sir Nicholas Fenn Mr Christopher R.M. Fox Mr Donald J. Higham Mr John M. Hoare Mr Tom B. Jackson Mr Lionel C. King Dr John M.H. Lloyd Parry Mr Donald V. Manson Mr J. Christopher H. Mason Revd Brian A. Mastin Mr Malcolm C.A. Rayner Mr Geoffrey N. Way	Mr Jeremy V.G. Taylor Professor John B. Tucker The late Mr Robin MacL. Watson	Mr Simon R.C. Wadsworth Mr Philip J. Williams	Mr Harry Platt Dr Andrew K.C. Smith Mr Richard J.E. Smith Mr Miles H. Smith-Morris
1933 Mr John E. McClellan				1966 Dr M. Paul Bristol Mr James A.W. Carlisle Mr Jeremy G. Colman Mr John A. Davenport Dr J. Barrie Evans Dr Douglas J.H. Macdonald Major General Nigel W.F. Richards Mr Neville W. Stevenson-Watt Mr Martin D. Stoll Mr Christopher St P. Stride	1971 Mr Balemale A. Bhat Mr George W. Binney Mr Martyn S.J. Buxton-Hoare Dr John S. de Caestecker Mr Ian H.A. Doherty Mr Mark D. Ellse Mr Richard F.A. Garsia Mr Stephen B. Jedburgh Dr Malcolm D. Macleod Mr Chris H. Moller Dr Robert Osborne Dr Campbell Ritchie Mr Jeffrey M. Shaw Mr Peter J. Wagstaff Professor Philip A. Williamson
1937 Mr Donald U. Jackson	1952 Dr Charles I. Backhouse Mr Nevil J. Barker Mr John R. Bartlett Dr John Farmer Mr Herbert E. Freer Mr Julius Hermer Mr David M. Longley Dr J.Gavin McLaggan Brigadier Peter L. Newth Dr Christopher E. Phelps Mr David E. Smith	1957 Dr Peter N. Brotherton Mr Robert D. Commander Dr David J. Delany Mr Malcolm R. Dillingham Mr John B. Griffin Professor Chris G.A. Harrison Professor James Y. Muckle Mr Gordon A. Read Mr Nigel H. Read Mr John E. Sharp Dr Alan M. Suggate Mr Barry B. Sutton Mr Adrian J. Williams	1961 Mr N. Douglas Brown Mr John P.H. Burden Mr Richard Handford Mr Martin H. Hayman Mr Nicholas P.S. Horne Mr Christopher G. Llewellyn-Jones Mr David W. Miller Mr Donald Paton Dr William B.A. Sharp Mr Charles D. Stancomb	1967 Mr Philip H. Bovey Mr John A.W. Butterworth Mr Ian D. Caruana Mr Graham A. Ceadel Mr George N. Cole Mr Hugh A. Collins Mr A. Richard Glencross Dr Michael J.D. Hobbs Mr B. Tim Jones The late Mr Dafydd S.W. Kidd Mr Brian M. Lippard Dr John M. Lloyd Professor John Maloney Mr Richard N. Mather Mr Alan P. Sainer Dr Michael E. Shipley Dr James B. Thring Dr Michael V. Williams	1972 Mr J.M. Tim Ambrose Mr Richard M. Dunmore Professor Jonathan D.G. Jones The Rt Hon. Michael D.X. Portillo Mr Andrew M.H. Simon Dr Neville J. Staunton Mr Peter F. Tromans Mr James D. Whitehorn
1939 Mr Alan S. Falconer Mr William H. Spray	1953 Dr Richard F. Bakemeier Mr Rex A.K. Baker Wing Commander David M.F. Bright Professor C. William Gear Mr J. Mike Henderson Mr Guy C. Hinds Mr David J. Hodgkins Mr Paul C.J. Metcalf Mr David Miller Mr Brian W. Oxley Mr E.F. Geoffrey Peck Mr Richard L. Tickell Mr Ralph I. Walker	1958 Mr Lachlan A. Cameron Mr Gerald Carter Dr Martin N. Clark Mr Patrick R. Gaskell-Taylor Mr Julian E. Hewitt-Smith Mr Paul Matthews Mr Nicholas J. Milner-Gulland Mr Philip Minor Mr Tony E. Montriou Mr J. Julian E. Shuckburgh Mr Michael A. Stumbles Mr Ronald G. Towers Mr Richard F. Woodhouse	1962 Mr Ian E. Banks Mr Malcolm C. Duff Mr Christopher C.B. Duffett Dr Martin C. Hayes-Allen Mr Peter C.R. Hudson Dr Jeremy Isenberg Mr Ian Jewesbury Mr Robert J.B. MacDowell Dr R. John Meadway Mr Robert A. Parsons Professor Srinivasa Ranganathan Mr K. Charles Rudd Mr Edwin W. Taylor Mr Keith F. Wagstaff	1973 Mr David Arnold Professor George Caird Professor H. George E. Hentschel Dr Peter B. King Mr Martin J.A. Thompson	
1940 Mr Jevon L. Crosthwait	1954 Dr Martin H. Bartlett Mr Ian M. Brown Mr Thomas C. Charlesworth Mr Clive A. Giller Dr Christopher J. Griffiths Mr John C. Griffiths Mr T. Jerry R. Gurney Mr W. Michael Herten Dr Gabriel Laszlo Dr Ian H. Longworth The late Hon. David A. Nelson Mr Samuel J. Osmond Cannon Christopher J. Sansbury His Honour Peter W.G. Urquhart	1959 Mr Michael G. Allen Mr John H. Collinson Mr Peter Conway Mr Geoffrey H.C. Coppock Mr Michael D. Frohnsdorff Dr Richard C. Godfrey Dr Robert F. Ker Dr John F. Ledlie The Rt Hon. Lord Howard of Lympne Mr Colin M.N. Stewart The late Dr David W. Sweet Mr John P. Ward Mr Vincent C. Watts Mr Anthony J. Winckworth	1963 Commander Tim H. Boycott Mr Peter M. Boycott Mr J.G. Benedict Heal Revd. Dr David E.H. Mole Professor John A. Roe Dr David A. Towell Dr Peter J. Wilkinson Sir David Wright	1968 Dr Robert J. Bryant Dr Malcolm J. Corbin Dr Hilary J. Dodd Revd Robert G.R. Evans Mr Thomas I. Hatton Mr Malcolm J. Prue Mr Christopher P. Rawling Mr Peter Rothery Mr Philip J. Sawyer Dr Anthony D. White	1974 Mr Francis T. Bassett Mr Toby C. Falconer Mr David R. Gardiner Dr Paul H. Jefferiss Mr Ruairidh Macdonald Mr Stephen J. Osmond Mr Jonathan M. Stoll Mr Christopher H. Walker
1941 General Sir Hugh Beach Mr R. Frank Glyn-Jones			1964 Mr Chris A. Austin Mr John L. Birch Revd Dr Dermot B. Fenlon Mr D. Michael L. Gee Dr Robert A.B. Keates Mr William B. Laidlaw Mr John N. Macgillivray Mr Roger J.B. Morris Mr John B. Page Mr Timothy S.I. Rose Dr Arnold A. Sherman The late Sir Hilary N.H. Synnott Dr Stephen C. Taylor Major John T. Yerbury	1969 Mr Doug. M. Astill Mr Philip E. Blood Mr Norman A. Brittain Mr David P. Griffin The Revd David R.W. Hares Dr Robin W. Hiley The Revd Robin R. Hine Mr Dennis C. Jordan Mr Stephen J. Leach Mr David C. Lowe Mr Charles W. Mathiesen Mr Patrick D. Silvey Mr Ian E. Somers Revd Nigel A. Ward	1975 Mr Patrick A.R. Barton Dr Richard W. Corkill Professor Paul D. Klemperer Mr Andrew J. Overy Dr Peter L. Read Mr Jacob C.M. Rivers Mr Robert M. Tickell Mr Timothy M.J. Watts
1942 Professor Robert G. Chambers Mr John D. Morgan Mr Eric W. Sorensen	1955 Mr John A. Aczel Professor Martin C. Albrow Mr Paul. R. Bielby Dr Beresford R.M. Crook Dr Robert J. Cryer Mr Owen M. Davies Mr Ian B.P. de Minvielle-Devaux Mr Brian P. Hogan Mr Simon G. McCandlish Mr Philip K. Starling Mr Anthony B. Wassell Mr B. Whitworth Mr John R.J. Yarnold	1960 Dr Peter J. Avgherinos Mr Michael G. Baker Mr Patrick E. Beresford-Huey Mr David E. Chaffin Dr Henry W.S. Chan Sir Michael Davies Mr Mike J. Lunan Professor J. Mark MacAlpine Dr R. Julian Preston Dr Edward W. Reed Dr Robin B. Stott	1965 Mr T. Michael N. Askwith Dr Timothy J. Carter Mr Dilip Chandra Revd Dr William J.D. Close Professor Timothy J. Cole Mr Swavek M. Deregowski Mr George L. Hopper Professor William E. Howden Mr William R. Pine-Coffin Mr Peter G. Sain ley Berry Mr Graham P.C. Saunders Mr S. Fred Shahrabani Mr Jeremy J.R. Smith	1970 Rt Revd Donald S. Allister Mr John R. Cameron Mr Andrew M. Gaulter Professor Jonathan L. Gorman Mr Timothy R. Horne Mr Timothy J. Matthews Dr Robert M. Muir Wood Mr Malcolm A.W. Oliver Mr Mark S. O'Sullivan	1976 Mr David J. Addey Mr W. Tudor Brown Mr Adrian S. Clark Mr Simon W. Dakeyne Mr Jonathan M. Franklin Mr Eric E. Freedman Mr Martin J. Garrod Mr Philip G. Geiger Professor Dominic J. Houlder Mr Mark B. Keatley
1943 Dr Derek M. Anthony Mr Peter Bryan The late Mr James R.H. Chalmers Mr John H. Fogarty Mr James Hasler Mr Bryan B. Overy Mr Kenneth J.V. Shield Mr F. Stanley Ward					
1944 Dr Dennis W. Brailsford Dr Geoffrey M. Brown Professor John A. Cannon Mr Donald R. Crosthwaite					
1947 Major David R. Goddard Colonel Philip D. Stenning Mr Laurence J.R. Whitby James					
1948 Dr Ronald M. Butler Mr Richard F. Cunningham His Honour Judge Rolf E. Hammerton Sir Christopher Hewetson Revd Father David W. Whitehead					
1949 Mr Keith W. Addis Dr Maxwell S. Bethell Revd Dr John Brothwood Mr Robert E. Elphick The late Dr Timothy R. Gurney Mr Peter H. Lloyd					
1950 Mr Clive T. Bilby Mr Eric J. Bushell Mr David J.M. Kitson Mr Robert D. Millett Mr Michael W. Rodd					
1951 Revd Robert S. Beresford Mr F.A. David Bland Mr Bruce J. Cryer Mr Kim K. Gibson-Wynes Mr Paul M. Hewlett					

Mr Alexander Krickic
Mr John C. Lotherington
Mr Andrew J. Milsom
Mr Nigel D. Wachman
Mr Neal A. Wade
Mr Nick R. Wells

1977

Mr Edwin M. Bergbaum
Mr Martin J. Edwards
Mr Howard L. Gilbert
Mr A. Nick Hewson
Dr John A. Jones
Mr Mark A. Lubbock
Mr Alasdair R.D.
Mackenzie
Mr T. Alan Nesbit
Mr Ian Peters
Dr Chris J. Urch
Mr David A. Wight
Mr Stephen D. Wilson

1978

Mr Peter D. Crosland
Mr Iain P. Duncumb
Lt Cmd. Philip A. Hall
Mr Robert H. Nevins
Dr Andrew J. Pocock

1979

Mr Nicholas D. Butler
Dr Jim G.M. Gatheral
Mr Stephen J. Hermer
Mr Ben S. Jordan
Mr John F. Richards
Dr Jonathan D. Sleath
Mr Andrew J. Swainston

1980

Mr Peter D. Firth
Mr Mike J.A. Fletcher
Dr Jeremy B.A. Green
Mr William K. Haggie
Mr David A. Hatfield
Mr John R. Sugden

1981

Mr George A. Adams
Mr David I. Adelson
Dr Rajapillai V. Ahilan
Mr Stephen E. Evans
Judge Edward J.W. Hess
Mr Peter W. Micklethwaite
Mr Neil L. Oakes
Revd Dr Alan R.L. Piggot
Mr Jean-Louis Velaise

1982

Professor Jonathan
R. French
Dr Michael P. Grenfell
Mr Michael A. Hall
Dr Roger J. Highmore
Mr Richard M. Horn
Mr Paul R. Mayhook
Mr Philip F.E. Seely
Mr Jonathan P. Shortis
Mr Peter L.G. Siddall

1983

Mr William P. Anthony
Mr Simon J. Coombs
Mr A. James Cullens
Dr Roland P.G. Henney
Mr Philip J.S. Lockett
Mr Timothy J. Mann
Mr Jonathan J. Oxford

Mr Ian R. Taylor
Mr J. Roger C. Thornton
Mr Kevin Watson
Mr Anthony P. Williams

1984

Mr Alistair J. Cochrane
Mr Ivor J.A. Harrison
Dr Neil G. Hartman
Mr Edward G. Heckels
Mr Andrew C. Jones
Mr Roger S.R. Lowe
Mr Nicholas P. Mulhern
Dr Ares Papangelou
Mr Kevin A. Quinn
Mr Martin H. Robinson
Mr Andrew M. Thomas
Major Michael C. Wilson

1985

Professor Timothy
M. Crane
Dr Robert M. Debenham
Mr David L. Edwards
Mr David J. Goodship
Mr J. Mark Gwynne
Mrs Clare L. Harwood
Mrs Julia M. Hayward
Miss Sally E. Mitchell
Dr Romney J.E. Pope
Dr Jeremy P. Reffin
Mr Julian M.V. Sharp
Mrs Susanna J. Young

1986

Professor Jonathon
A. Chambers
Mr Mark J. Copeland
Professor Adrian K. Dixon
Dr Robin Dunford
Mrs Helen J. Hayward
Mr Roddy M. Houston
Dr Neil G. Jones
Mr Chris J. Minter
Revd Professor John
L. Morgan
Mr Giles R. Ward

1987

Mr Neil A. Baylis
Mrs Gill Cain
Mr James R. Levy
Mrs Virginia L. McLean
Mr Richard W. Porter
Dr Olaf P.A. Schulz-Gardyan
Mr Julian A.V. Smith

1988

Dr Susanna M.
Avery-Quash
Mr Stuart G. Baines
Mr Julian Cain
Mrs Samantha J. Davies
Mrs Danielle Epurescu
Mrs Joanna M. Greenwood
Mr Simon P. Gwynne
Mr Jeremy R. Jensen
Dr Robert J. Leedham
Mr David J. Merchant
Dr Mike Partridge
Dr Josseph E. Pesce
Mr Jack S. Pitman
Mr Richard J. Shepherd
Mr Redmond P.D. Szell
Mr Peter C. Thomas
Mr Stuart Vincent

1989

Mr Dennis S. Baker
Mr Richard J. Carr
Mr Alan J. Davies
Mr William J.L. Downing
Mr Robert D. Fielder
Mr Fraser J.T. Howie
Dr Paul A. Lewis
Dr Peter M. Niemann
Mr Richard T. Preston
Dr I. Huw O. Price
Dr D. Mike Turner
Mr John M. Woolley

1990

Mr Ian G. Biller
Dr David M. Carter
Dr Y. Wai Chen
Mr Anthony M. Edwards
Mr Marc A.L. Geall and
Mrs Jenny M. Geall
Mr Amit Gupta
Mr Thomas C. Harding
Dr John E. Huber
Mr Donato Maturro
Mrs Christina
J.M. Reynolds
Dr Michele C. Warren
Mr Kan K. Wong

1991

Professor Thomas
O. Breuer
Mr Gary I. Candido
Mr David W. Dagnall
Mrs Alex L. Fontanelli
Dr Sophie E. Jackson
Mr Paul Jepson
Mr Alexander J. Kuropatwa
Mr Dan P. Linstead
Mrs Cathryn M. O'Hare
Mr David Sidgwick
Dr Digby D. Symons
Mr William A.L. Thomas
(Ambrose & Ann
Appelbe Trust)
Dr Laura J. Woollatt

1992

Professor James S. Curl
Dr Elizabeth J. Emerson
Dr David J. Galvin
Dr Michael S. Grant
Mr Julian R. Greenhill
Mr Alan T. Lyons
Dr Oliver J. Ratcliffe
Dr Faisal N. Sethi
Mr Christopher C.D. Spink
Mr John B. Tanter
Mr Sanjay K. Vidyarthi
Mr Matthew J. Webb
Mr Anthony J.
Zacharzewski

1993

Miss Lynnette J.C.M. Bober
Mr Taavi K.A.K. Davies
Mr Michael D. Holmes
Miss Catherine A. Kropp
Mr Craig S. Majernik
Mr Andrew S. McCullough
Mr Luke N. and Mrs Emma
M. McEwen
Mr Robert J. Patterson
Mr Andrew D. Reynolds

Professor Christopher
D. Rielly
Miss Sarah L. Speller

1994

Mr Charles J.S. Gorman
Mr Philip J. Holden
Dr Wei M. Huang
Professor Andrew
M.L. Lever
Dr Hallvard Lillehammer
Mr Gregory J. Moreton
Mr Jonathan J. Rodger
Mr Nick Tallantyre
Mr Uday Walia

1995

Mr Alan P. Bell
Mr Michael J. Darvell
Mrs Adele L. Evans
Mr James R.K. Ford
Dr Amy E. Hughes
Dr Khaleel M. Jamil
Mr Jaimal Kothari
Mr Gareth J. Lewis
Mr Kenneth H. Luker
Dr Rob S. Moir
Mr Mark D.Y. Nicholson
Miss Katie M. Ray
Dr Louella K. Vaughan

1996

Miss Rachel M. Bastiaenen
Mr Tom A. Cox
Mr R.E. Bradshaw Crombie
Revd Dr Stephen D.
Hippisley-Cox
Mr Robert D. Jones
Dr Ferdinand M. Knapp
Mr Paul M. Mawdsley
Miss Astrid M. O'Brien
Mrs Suzanne C. Owen
Revd Dr Peter B. Rouch
Dr Anthony J. Williams

1997

Mr Philip A. Bartram
Mr William J. Bradley
Mr Jonathan O. Hughes
Miss Sarah F. Ioannou
Mr James D. Jacobs
Mr Luke D. Jarvis
Mr Zane M. Kanderian
Mr R.J. David Lascelles
Mr Dalbir Singh
Mr Duncan T. Wagstaff
Mr Martin Wygas

1998

Mr David R. Boardman
Mr David S.N. Butcher
Dr Danny S.L. Chow

Dr James A. Curran
Dr Kirsty M. Cuthill
Dr Matthew S. Dyer
Revd Alex R.S. Faludy
Revd Dr Neil K. Gardner
Dr Simon J. Pilgrim
Mrs Annabel R. Sims
Mr Gareth J. Sutcliffe
Dr David Szuts
Mr Simon P. Toyne

1999

Mr Tom T. Balogh
Mr Christian K. Barltrop
Mr Julian D. Dale
Mr Kevin J. Dalton
Mr Sam R.J. George
Mr Philip G. Offord
Mr Nabeel Rauf
Mr Mark Rowland
Dr Dalal Tahri
Mr Hans B. von Doernberg

2000

Mr Chris J. Bentley
Mr Ed J. Dearing
Mr Antonia M.P. Dos
Remedios
Mr Paul D. Flower
Miss Karen A. Hooton
Dr Keir A. Shiels
Mr Yiqian Sun

2001

Mr William S. Fisher
Miss Lucy J. Gill
Mr Benjamin J. Hoyle
Miss Stefanie M.H. Ismar
Ms Kate L. Merriam
Miss Lauren K. Moorcroft
Dr Galya D. Reuter
Mr Christopher J.
Swarbrick
Mr Mark D. Symes
Dr Adam P. Wagner

2002

Dr Angus A. Brown
Dr Elizabeth J. Cole
Mr Alex J. Collins
Mrs Johanna M.O. Dale
Dr Nicholas Doiron-
Leyraud
Dr Kateri F. DuBay
Mr Colin J.C. Fulton
Miss Fionnghuala C. Griggs
Mr Jeremy J. Marchant
Dr Andrew M. Spencer

2003

Wing Commander
Gerard Doyle

Mr Adrian C. Gahan
Mr Patrick A.J. Overy

2004

Mr Alexander R. Campbell

2005

Miss Jennifer Scott-
Thompson
Revd Dr T. Kevin Taylor
Revd Guy M. Trewweek

2008

Professor I. Norman
R. Davies
Ms Amrita Dhar
Mrs Gisela Gledhill

Friends

Astra Zeneca Plc
(Dr Robert Osborne –
matched giving)
Professor James G. Basker
Exxon Mobil
Foundation Inc
(Mr Eric W. Sorensen)
Hardingham Trust
Ms Mary Harrell
Mrs Lavinia Hinton
Mrs Fiona Hodgson
(in memory of the
late Sir Hilary Synnott)
Ms Nancy Isray
Mr Andrew and Mrs
Carole Jepson
Dr Helen Lee
Dr Charles and Mrs
Lucy Lott
National Manuscripts
Conservation Trust
Mrs Mary Nelson
(wife of the late
Hon. David A. Nelson)
Mrs Rena Partridge
Mrs Margaret Poolman
(wife of the late Mr
Geoffrey Poolman)
Dr Marian Read (Read
Family Endowment)
The David Ross Foundation
Charitable Trust
The Kohn Foundation
Trustees of the John Harris
Charitable Trust
UBS Ltd –
(Mr Roger J. Highmore)
Mr Francis Witts
(in memory of the late
Sir Hilary Synnott)

Peterhouse and the Development Campaign

Final approval has now been given for the extension of Gisborne Court. We start work in August on the Whittle Building, though we are still looking for funds. We hope to put up a webcam so you can watch progress.

For further details and Key Facts about Peterhouse see:
www.pet.cam.ac.uk/petreans/.

Peterhouse